



Sport-Tek® Ladies Sport-Wick® Stretch 1/2-Zip Pullover. LST850



An extremely flexible layer with a soft-brushed backing and moisture control for year-round comfort.

- 90/10 poly/spandex
- Tag-free label
- Smooth-faced
- Chin guard for additional comfort
- Cadet collar
- Taped neck
- Raglan sleeves
- Thumbholes to keep hands warm
- Hidden front pouch pocket
- Open cuffs and hem

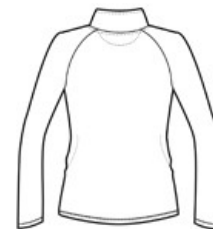
**Due to the nature of 100% polyester performance fabrics, special care must be taken throughout the screen printing process.*

CARE INSTRUCTIONS

Machine wash cold with like colors. Do not use fabric softener. Do not bleach. Tumble dry low. Cool iron, if necessary. Do not dry clean.



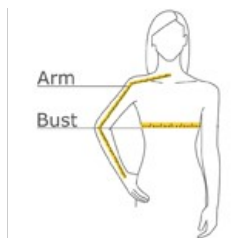
front



back

Tips For Effectively Screen Printing Polyester Fabrics

HOW TO MEASURE



BUST

With arms down at sides, measure around the upper body, under arms and around the fullest part of the bust.

ARM

Place hand on hip. Start at the center of the back of the neck and measure across the shoulder, to the elbow, and then down to the wrist.

SIZE CHART

	XS	S	M	L	XL	XXL	3XL	4XL
Chest	32-34	35-37	38-40	41-43	44-46	47-49	50-53	54-57
Arm	30-30 3/4	30 3/4-31 1/2	31 1/2-32	32-32 1/2	32 1/2-33	33-33 3/8	33 3/8-33 3/4	33 3/4-34 1/2
Size	2	4/6	8/10	12/14	16/18	20/22	24/26	28/30

COLOR INFORMATION



Black
PMS NTR BLACK
C



Charcoal Grey
PMS 7540C



Charcoal Grey
Heather
PMS 7540C



Charge Green
PMS 2297C



Dusty Rose
PMS 702C



Forest Green
PMS 553C



Hot Coral



Iris Purple
PMS 7673C



Maroon
PMS 504C



Pink Rush
PMS 7435C



Pink Rush Heather
PMS 228C



True Navy
PMS 533C



True Navy Heather
PMS 533C



True Red
PMS 200C



True Royal
PMS 7686C



True Royal
Heather
PMS 7455C



White